



FM21^e + K Series Scale

Digital Weighing Scale Indicator



FM21^e is built to answer the needs of highly demanding applications in the aspect of transaction & data speed, number of peripheral connection, management data & security, flexibility of operation and flexibility of future expansion. Maximum AD conversion speed up to 480 times per second plus 9 filter strength levels to meet almost all requirements from high-resolution static weighing to high-speed dynamic applications.

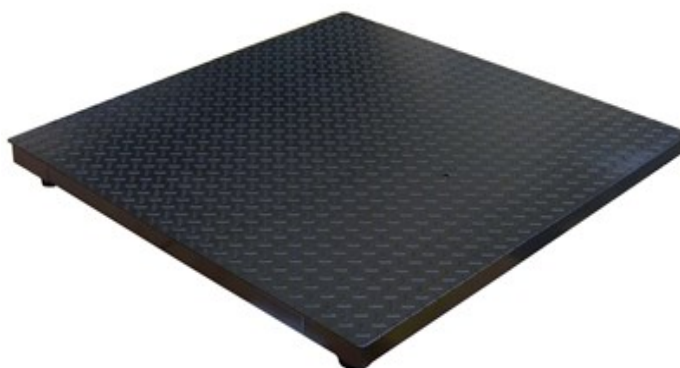
User definable PC output protocol means unsurpassed capability to meet all data format requirements from remote displays, production management to ERP systems.

Built-in non-resettable memory to store all details of up to 130,000+ transactions. Daily, monthly and specific period reports can be recalled and generated anytime according to your search criteria.



Independently Configurable Function Modes

- Static & Dynamic Weighing
- Piece Counting
- Action-Tare-Memory (ATM)
- Peak Measuring
- Grading and Sorting up to 10 Set Points and 8
- Grades Checking Function for Weighing, Piece Counting, ATM, Grading, and Sorting Function



Built-In Control Logic

- Static and Dynamic Check
- Inflow and Outflow Control
- Constant Feeding
- Constant Dispensing with Auto Refilling,
- Dual Speed Filling
- Batching up to 8 Ingredients
- Dual Speed Discharge
- Discharge and Refill
- User Programmable Logic for each and individual Relay Output

Connectivity

- Maximum 4 independent configurable comports.
Maximum Baud Rate = 921600
 - Hardwire Connection Types (standard) include RS232, RS485 and TTL
 - Wireless Communication Types (optional) include Bluetooth 2.0 /4.0 and WIFI
- Optional isolated RS232 to Ensure High Speed Data
- Communication even in a High Interference Environment
- Optional Built-in 8-Channel Control Relay Board.

Versatility, Functionality and Accuracy are always Built-in

Operation Features

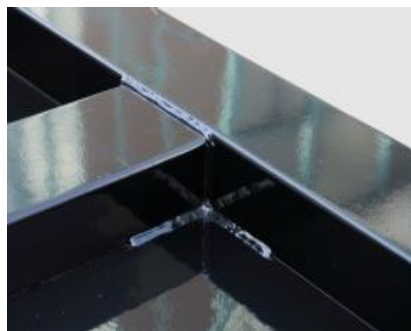
- Primary and Secondary Displays: -
 - Display #1: - 6 x 25mm LED Numeric Digits
 - Display #2: - 6 x 10mm LED Numeric Digits
 - Display #3: - 6 x 10mm LED Numeric Digits
- Support Single Range, Dual Range and Dual Interval Operation
- Support both Tension and Compression Load / Force Direction
- Near Zero Weight Value for Dynamic Weighing to avoid False Signal Output
- Repetitive and Continuous Tare Operation
- Continuous Tare with Configurable Delay Time before Tare Action
- Real Time Clock with Backup Battery
- Watchdog System to Prevent Damages Caused by Load Cell Short-circuit.
- Configurable Tri-Color Check Result Light Bar
- Configurable Keypad, Check & System Buzzer

Management Features

- 130000+ Non-Resettable Transaction Memory
- Daily, Monthly, specific Period Report Output
- Multi Search Criteria for Report Generation
- Configurable Machine ID, Machine Group and Operator Number to Enhance Ease of Multi-Scales Applications and Management Records
- Customer & Product Code Input through Serial Scanner, Keypad or Barcode Reader
- Customer & Product Code Support Numbers, Alphabets and Selected Symbols
- Quick Access PLUs for Weight Limits, Quantity Limits and Preset Tare Values
- Direct PLUs for Customer & Product Codes
- Check Result Control for Accumulation, Data Printout & Data Output
- Keypad Lock Function
- Support Inquiry, Setting and Execution Commands from PC
- All Current Operation Results Output in Data Base Format Increases Ease & Efficiency of Data Management, Processing & Analysis
- Support Ticket Printer and Label Printer (Datecs LP-50 & TSC TDP-225, TDP-247, TDP-345, TTP-225, TTP-247, TTP-345)
- Selectable Portrait / Landscape Ticket Printout Format
- 10 x Built-in Predefined Continuous / Internal Output Protocol
- User Programmable Continuous / Internal Output Protocol

Displays and Indications

- 1 Primary plus 2 Secondary Displays provide Clear Information about Results, Settings, and Next Target
- Value of the Current Operation
Tri-Color Check Result Light Bars Present Pin-Point Accuracy about where and how far the Current
- Weight is and away from the Target Value
Zero, Net, Weight Unit, Memory, Lo Battery, Relay Output and Charge Status Indicators



XSB is designed & built to meet a wide range of heavy traffic & high resolution industrial applications up to 6000kg.

It delivers un-exceptional reliability, accuracy and skin smooth performance to meet weighing, batching and counting needs.

Versatility, Functionality and Accuracy are always Built-in

XSB Series Precision Heavy Duty Floor Platforms

Specifications

Model No.	Platform Size (mm)		Load Cell		
XSB-0808 (A, N)	800 x 800		<div>Type: -<ul style="list-style-type: none">A: - OIML / NTEP C3 approvedN: - FM Special Grade</div> <div>Assignment: -<ul style="list-style-type: none">4 x 500kg for Max = 1T4 x 1000kg for Max = 2T4 x 1500kg for Max = 3T4 x 2000kg for Max = 5T4 x 3000kg for Max = 6T</div>		
XSB-0810 (A, N)	800 x 1000				
XSB-1010 (A, N)	1000 x 1000				
XSB-1012 (A, N)	1000 x 1200				
XSB-1212 (A, N)	1200 x 1200				
XSB-1215 (A, N)	1200 x 1500				
XSB-1515 A, N)	1500 x 1500				
XSB-1520 (A, N)	1500 x 2000				
XSB-2020 (A, N)	2000 x 2000				
Nominal Capacity (Max)	1T	2T	3T	5T	6T
Adjusted Eccentric Accuracy (kg)	0.05	0.1	0.2	0.5	0.5
Structural Strength	Maximum = 6T; Safe Overload = 7.2T				
Material & Structural Data	All Material = Mild Steel				
	Thickness: - <ul style="list-style-type: none">Top Plate Thickness ≥ 5.14mmUnderneath Columns Thickness ≥ 3.5mmLoad Cell Support Blocks ≥ 18.0 mm				
	Width: - <ul style="list-style-type: none">Width of Load Cell Mounting Columns = 120mmWidth of Reinforce Columns = 120mm				
	Overall Height: - <ul style="list-style-type: none">71mm (platform only)97mm (completed with Load Cells and Adjustable Feet)				
Construction Accuracy	Better than 0.25%				
Load Cell & Output	OIML / NTEP C3 Approved or FM Special Grade 40CrNiMoA Alloy Steel Load Cells, 3mV/V				
Junction Box	JB-46S Stainless Steel Junction Box				
Signal Cable	5m 6-wire Shielded Cable Included				
Operating Environment	-10 ~ 40°C (14 ~ 104°F) Non-condensed R.H. ≤85%				

In the interest of improvement, specifications may change prior to notice

Option

- Mild Steel Ramp
- Pit Installation Frame

Order Code

Model No.: - Nominal Capacity - Load Cell Type.

Examples -

- XSB-1010-1T-A for platform size = 1 x 1m; nominal capacity = 500kg; with approved load cells.
- XSB-1215-2T-N for platform size = 1.2 x 1.5m; nominal capacity = 2000kg; with FM Special Grade load cells.

- **Material Grade**
- **Material Thickness**
- **Tooling & Method used to handle Material Cutting, Blending ... etc.**
- **Smart & CNC Made Oversized Heavy Duty Load Cell Supporting & Mounting Blocks**
- **Strict Construction Accuracy Standards Applied**

- **Smart & High Quality Stainless Steel Junction Box used**
- **OIML / NTEP C3 Approved or FM Special Grade Load Cell**
- **High Density Channel Frame Allocation**
- **High Quality Epoxy Coating**

- **Extremely Rigid Structural Steel Channel Frame Specifically Designed for Heavy Traffic**
- **Super Strong Channel Frame Provides Extra Protection by Enclosing the Load Cells, Cable and Junction Box Inside and away from Chemicals and Other Industrial Element**

- **Heavy-Duty Industrial design Threaded Eyebolt Holes for Easy Lifting**
- **Top-of-Floor or In-Floor Mounting**
- **Swivel Adjustable Feet Eliminate Weighing Errors due to Misalignment**
- **Construction Accuracy: - Better than 0.25%**

- **Stainless Steel Wall/Desktop Mount Holder**
- **SP-POS58IV & SP-POS88IV Thermal Ticket Printer**
- **LP-50, TDP-225, TTP-225, TTP-247, TTP-345 Label Printer**
- **Serial Barcode Reader**
- **WM Wireless Communication Module**
- **RD-DOT Dot Matrix Remote Display**
- **Bluetooth 4.0BLE Module**
- **Bluetooth 2.0 Module**
- **Isolated RS232**
- **Built-in 8-Channel Control Relay Board (Factory Installation)**
- **WIFI Module**
- **DPP-250 Bluetooth Thermal Printer**

